



2022

VALUE REPORT

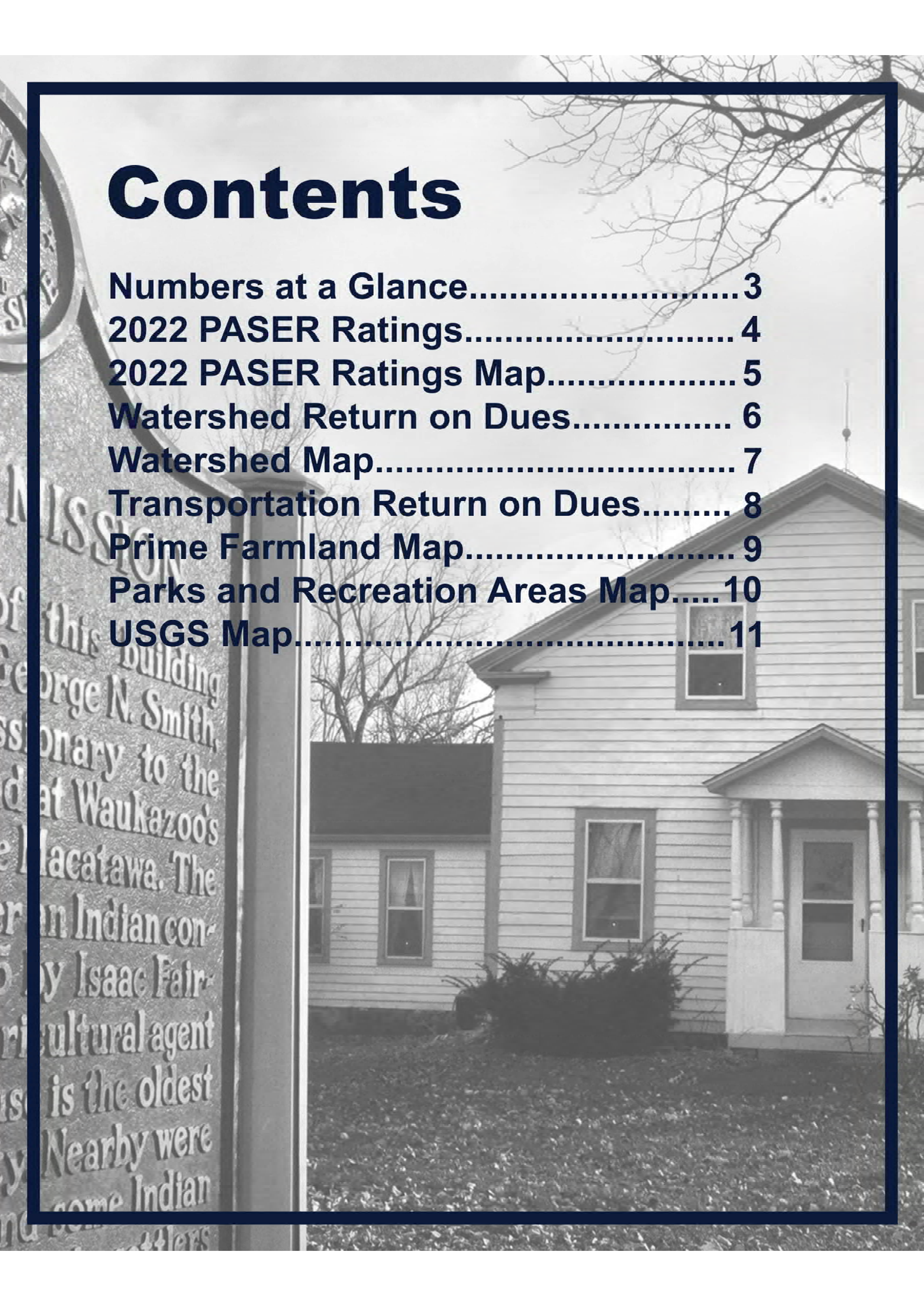
Prepared For:

Fillmore Township

MA Macatawa Area
CE Coordinating Council
A Cooperative Effort Among Units of Government

Contents

Numbers at a Glance.....	3
2022 PASER Ratings.....	4
2022 PASER Ratings Map.....	5
Watershed Return on Dues.....	6
Watershed Map.....	7
Transportation Return on Dues.....	8
Prime Farmland Map.....	9
Parks and Recreation Areas Map.....	10
USGS Map.....	11



NUMBERS AT A GLANCE

Fillmore Township



28.3

Area in Square Miles



179

Acres of Parkland



25.0

Square Miles in
Macatawa Watershed



21.4

Square Miles
of Agricultural Land



2,778

Population (2020)



1847

Year Established



3.7

Square Miles
of Built-up Land



2.5%

Population Growth
(1990 to 2020)

2022 PASER Ratings

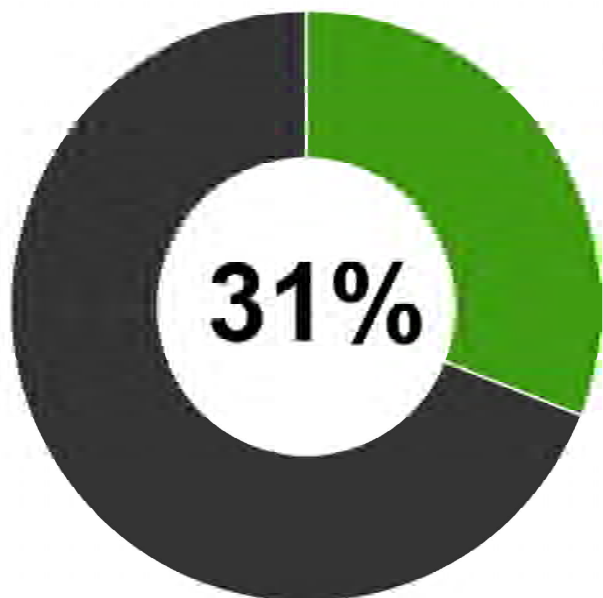
The Pavement Surface Evaluation and Rating (PASER) scale is a rating system for road pavement conditions. PASER uses visual inspection to evaluate pavement surface conditions. The ratings provide a basis for comparing the quality of roadway segments.



ROAD RATINGS

Out of 100.44 miles of roadway, Fillmore Township has 45.6 miles of federal aid-eligible roads. Using the PASER rating system, roads were given a rating of 1-10, with 1 being the poorest condition, and 10 being the best condition. Below is how your area's road segments were rated on July 21, 2022:

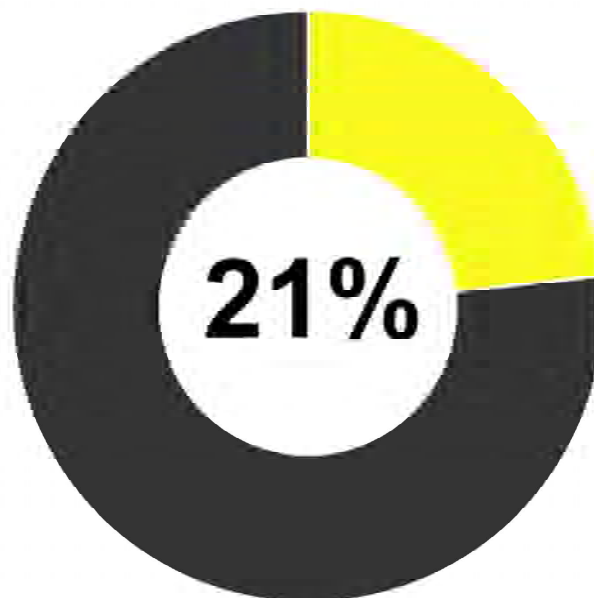
GOOD (Rating of 8-10)



14.30 Miles

- 141st Ave. from 58th St. to M-40
- Fillmore Rd. from M-40 to Russcher Rd.
- 142nd Ave. from Russcher Rd. to 48th St.
- Blue Star Hwy. from 58th St. to 60th St.
- US-31 from I-196 to Holland City Limits
- I-196 from 60th St. to 58th St.
- I-196 from Ottogan St. to Holland City Limits

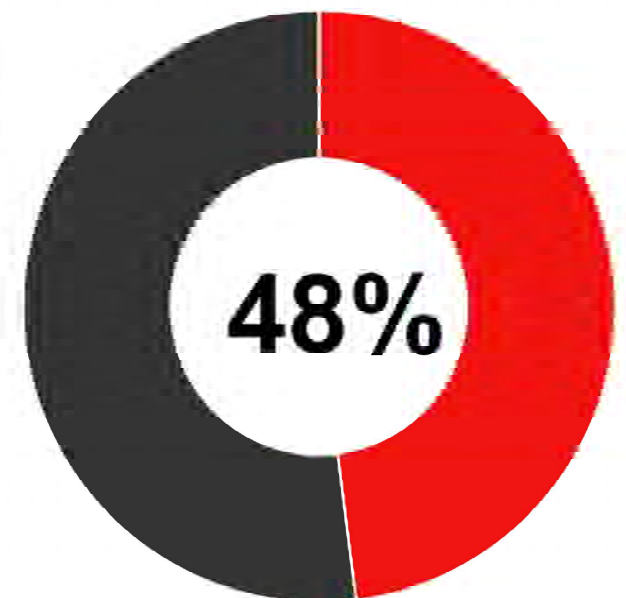
FAIR (Rating of 5-7)



9.40 Miles

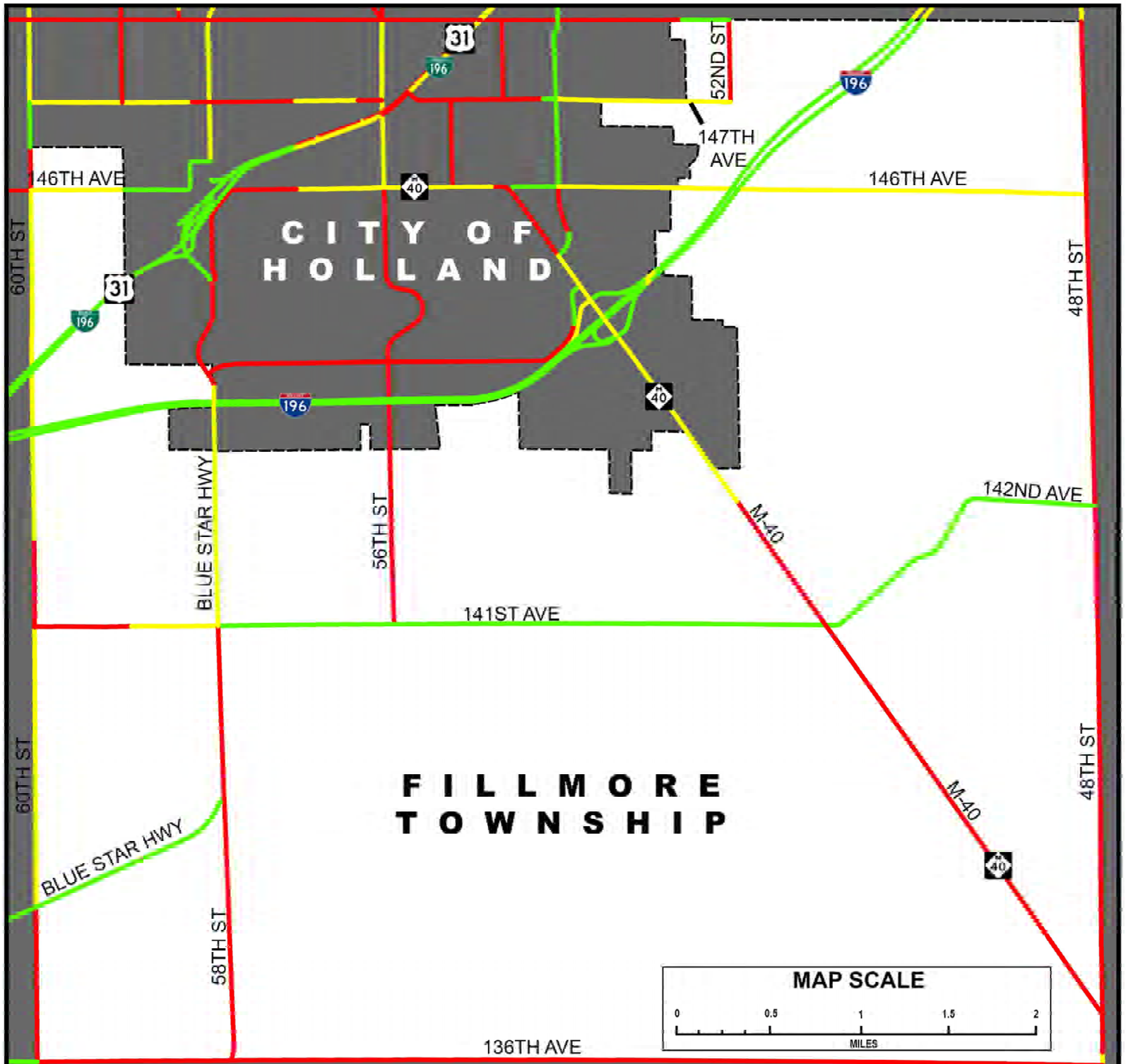
- 146th Ave. from 48th St. to Holland City Limits
- 60th St. from Blue Star Hwy. to 141st Ave.; from 142nd Ave. to 146th Ave.
- 58th St. from 141st Ave. to Holland City Limits
- 141st Ave. from 59th St. to 58th St.
- 146th Ave. from 60th St. to Holland City Limits
- M-40 from 52nd St. to Holland City Limits

POOR (Rating of 1-4)



21.90 Miles

- 136th Ave. from 60th St. to 48th St.
- 48th St. from Ottogan St. to 136th Ave.
- M-40 from 52nd St. to 48th St.
- 58th St. from Blue Star Hwy. to 136th Ave.
- Blue Star Hwy. from 141st Ave. to 139th Ave.
- 56th St. from 141st Ave. to Holland City Limits
- 141st Ave. from 60th St. to 59th St.



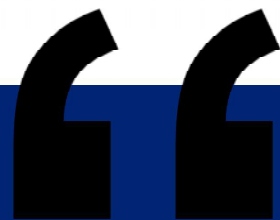
RATING	1	2	3	4	5	6	7	8	9	10
MILES	0	1.0	3.0	17.9	1.0	2.6	5.8	7.4	5.8	1.1
PERCENT	0	2.2%	6.6%	39.2%	2.2%	5.7%	12.7%	16.2%	12.7%	2.5%

PASER Ratings

Fillmore Township (July 2022)

2022 WATERSHED DUES

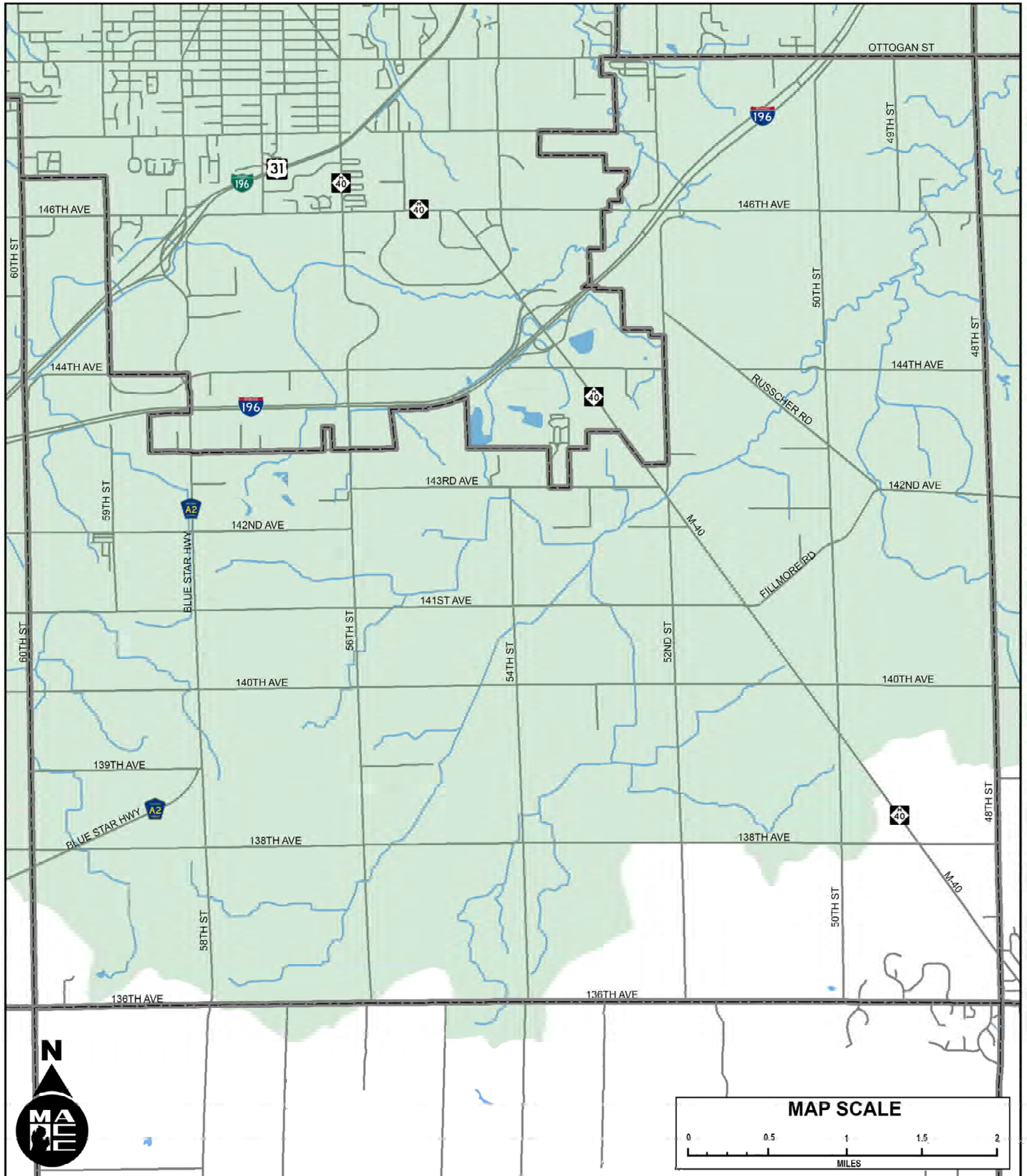
\$2,636



On behalf of the MACC, ODC has administered over \$1 million in grants to protect Lake Michigan, where all watershed drain.

YOUR WATERSHED DUES:

- Saved over 357 tons of sediment from entering local waterways
- Ensure that over 1.2 million gallons of water are treated annually.
- Has supported 46 clean-up events that have removed 3,661 pound of trash from local waterways
- Provide technical assistance to all watershed residents, urban and rural, to address water quality concerns
- Conduct community outreach and education
- Leverage grants to support implementation and construction of urban and rural best management practices
- Provide technical assistance and water quality education to residents in the MACC Planning Area
- Provide stormwater permit compliance to the cities of Holland and Zeeland, Ottawa County, Allegan County, and their respective road commissions
- Assist local municipalities with implementing stormwater ordinances and enforcing county development rules
- Conduct property evaluations and recommend best practices for preventing stormwater pollution
- Train municipal staff on illicit discharge awareness, pollution prevention, and stormwater inspection procedures

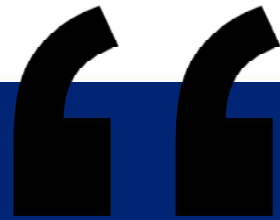
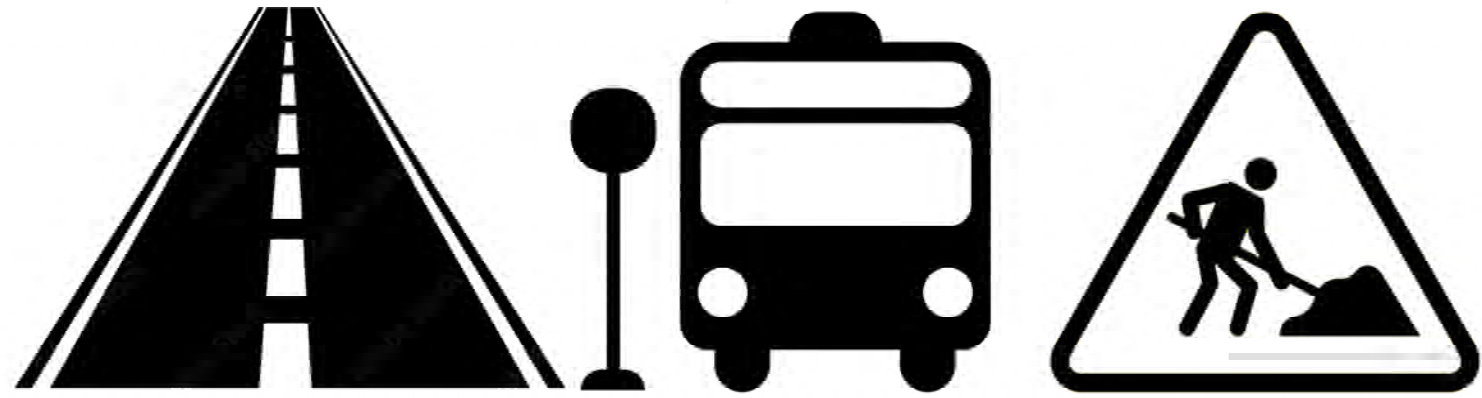


Lake Macatawa Watershed

Fillmore Township (July 2022)

2022 TRANSPORTATION DUES

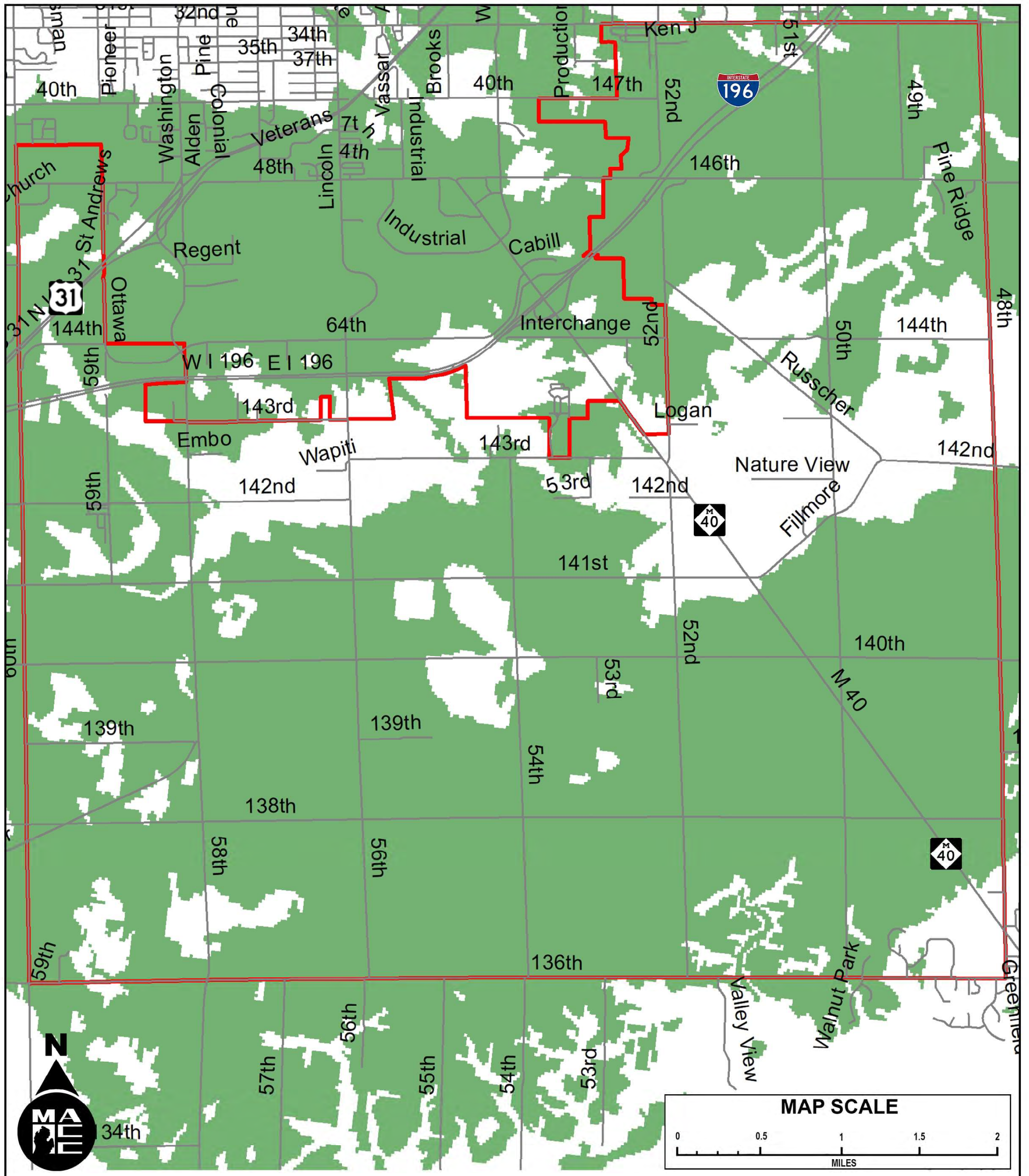
\$2,761



Your dues are used to leverage \$74.9 million in regional projects through FY2026.

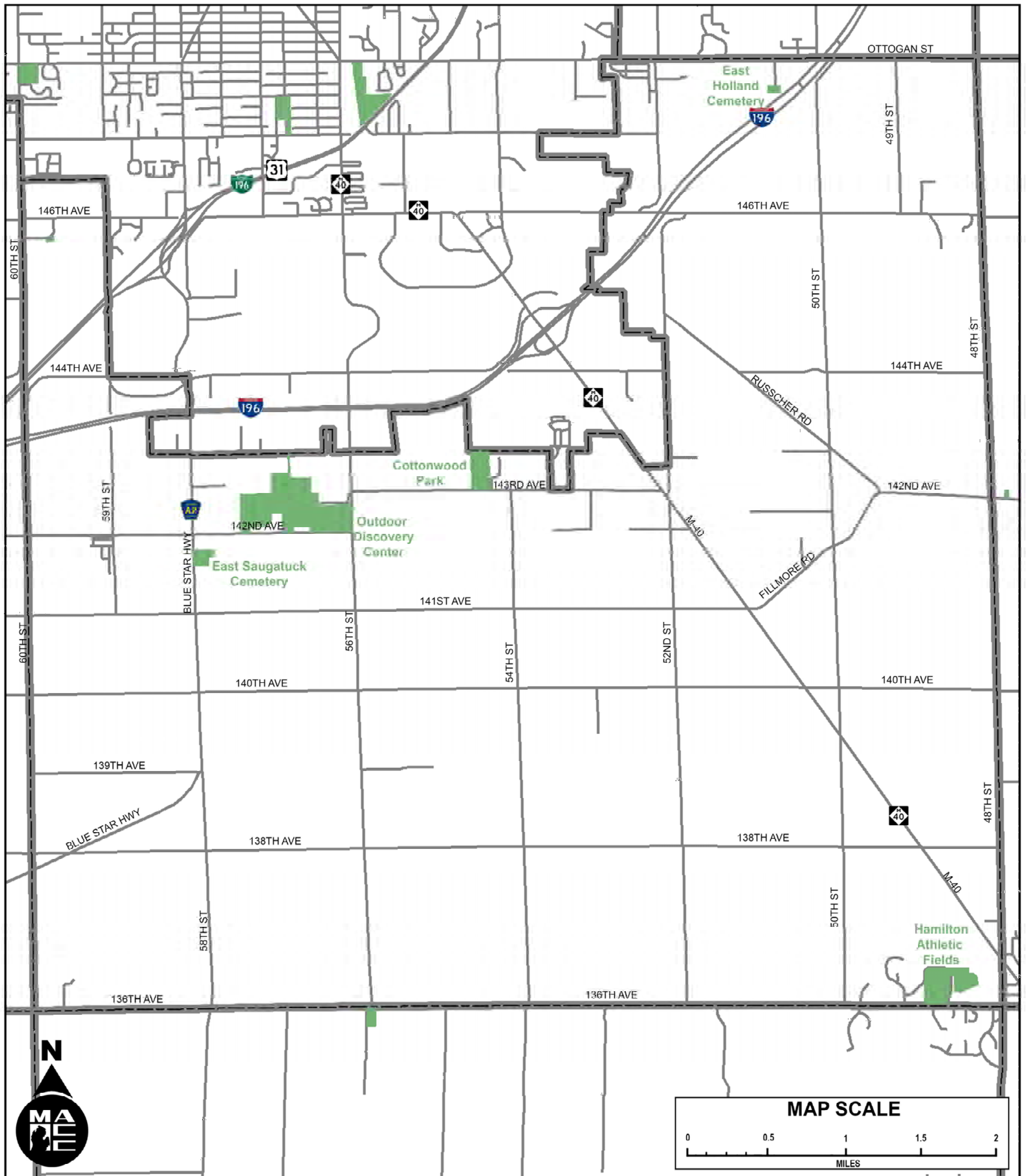
YOUR TRANSPORTATION DUES:

- Support regional cooperation among local units of government in regards to roads and non-motorized path networks
- Are used to leverage \$74.9 million in regional projects through FY 2026
- Enable the development of a long-range, regional transportation plan to guide transportation decision making and activities
- Support the regional Business Loop I-196 non-motorized pedestrian crossing study
- Support federal transportation dollars received by the Allegan County Road Commission to benefit Fillmore Township
- The Allegan County Road Commission has spent the following amount in Fillmore Township in FY 2022:
 - Snow Removal - \$135,750
 - Culverts - \$41,587
 - Trees and Shrubs - \$37,341
 - Patching - \$26,336
 - Ditching - \$21,933
 - Pavement Marking - \$14,904
 - Permanent Signs - \$8,646
 - Mowing - \$8,045



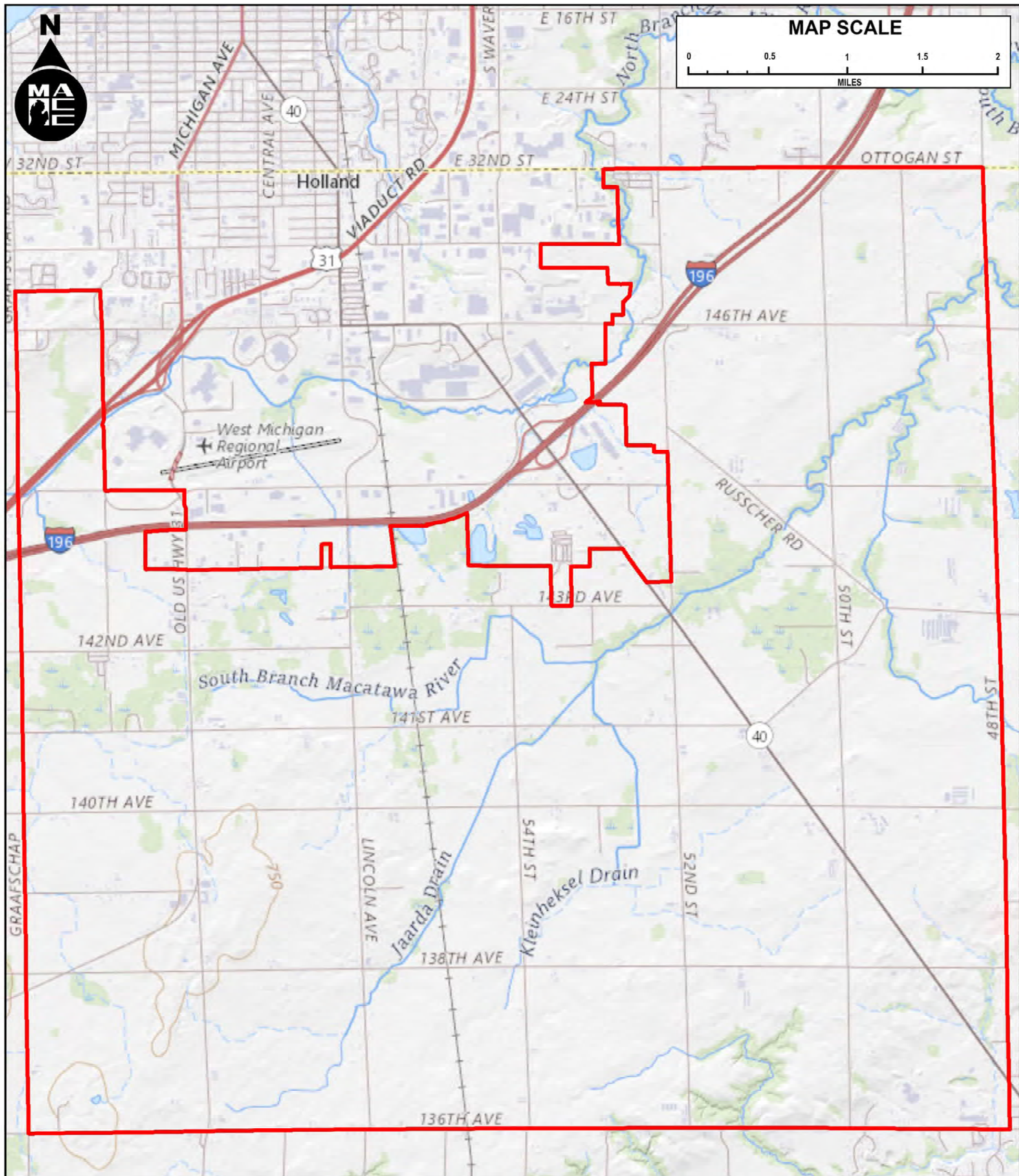
Prime Farmland

Fillmore Township (July 2022)



Parks and Recreation Areas

Fillmore Township (July 2022)



USGS Map
Fillmore Township

Members of the Macatawa Area Coordinating Council



FILLMORE TOWNSHIP



PORT SHELDON TOWNSHIP

Laketown Township

Holland
MICHIGAN

ZEELAND



Ottawa County
Where the Legend Begins



Eric Dykstra
GIS Specialist

Jason Latham
Executive Director

Judy Visscher
Office Administrator

Alec Miller
Transportation Planner

"To Encourage Cooperation Among Neighboring Units of Government on Area-Wide Issues."



Macatawa Area Coordinating Council
301 Douglas Avenue
Holland, Michigan 49424
(616) 395-2688
info@the-macc.org