

Macatawa Watershed Project Demonstration Sites



Ottawa County Road Commission Storm Water Outfall Bioswale (2007)
Stabilized an area of severe erosion due to a storm water outfall by addition of an infiltration bioswale and coir logs. Supported by OCRC, the Great Lakes Basin Program and the MACC.



Noordeloos Creek Treatment Wetland Demonstration Site (2006)
Allows for flood storage and treats sedimentation. Supported by Robert DenHerder, Great Lakes Basin Program and the MACC.



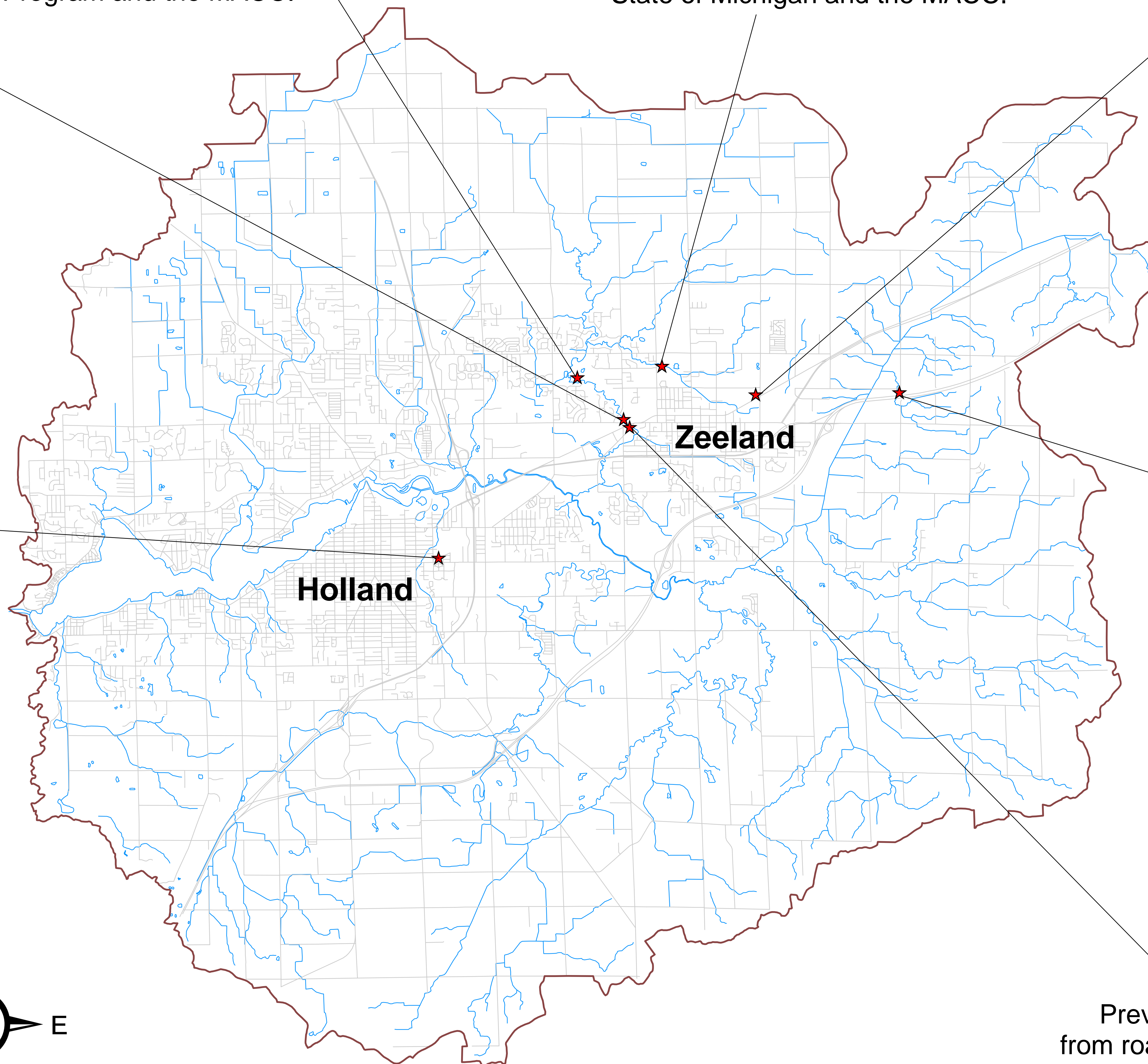
Zeeland Public Schools Wetlands Demonstration Site (2003)
An outdoor classroom to show wetland functions and their importance. Supported by Zeeland Public Schools, Mirant, the State of Michigan and the MACC.



City of Zeeland Street Maintenance Facility Bioretention (2008)
Replaced a typical dry detention pond with native vegetation and bioretention area. Supported by City of Zeeland, the State of Michigan and the MACC.



Smallenburg Park Urban Storm Water Demonstration Site (2004)
A connected series of bioretention areas to encourage runoff infiltration and reduce storm water discharge from site. Streambank stabilization and wetland creation. Supported by the City of Holland, Hope College, the State of Michigan and the MACC.



MDOT Roadside Bioswale (2007)
Repair of a roadside drainage way to reduce erosion. Supported by MDOT, the Great Lakes Basin Program and the MACC.



City of Zeeland Paw Paw Bridge Park Bioswale Demonstration Site (2008)
Prevents erosion and treats storm water runoff from road and park via bioswale, native vegetation and increased infiltration. Supported by City of Zeeland, the State of Michigan and the MACC.