



**Macatawa Area  
Coordinating Council**

*A Cooperative Effort Among Units of Government*



Macatawa Watershed Project

**AGRICULTURAL OUTREACH COMMITTEE**

**Thursday, August 27, 2009**

**10:00 AM**

**MACC Office**

**301 Douglas Avenue, Holland**

**Policy Board**

▸ Blaine Kooops, Chair  
▸ Rosemary Ervine  
▸ Hannes Meyers, Jr.  
▸ Pankaj Rajadhyaksha  
▸ William Vanderbilt  
Howard Baumann, Jr.  
Terry M. Burns  
Terry Hofmeyer  
Lester Hoogland  
John Kleinheksel  
Dal McBurrows  
Albert McGeehan  
Al Myaard  
Terry Nienhuis  
Keith Potter  
Amanda Price  
Gord Schrotenboer  
Russ Te Slaa  
Dave Vander Kooi  
Todd Wolters

▸ Executive Committee

**Agenda**

I. PRODUCER SURVEY

*In past meetings we have finalized the survey content, cover letter and implementation timeline. We will discuss how to advertise this survey, gain publicity and encourage participation.*

II. REVIEW OF MDEQ'S LANDSCAPE LEVEL FUNCTIONAL WETLAND ASSESSMENT

*The DEQ Landscape Level Wetland Functional Assessment (LLWFA) effort is intended to assist watershed planning groups with prioritizing wetland preservation/restoration activities, based on ecological function. As part of the LLWFA, we were provided with maps showing wetland loss since presettlement times and showing prime areas for wetland restoration. **According to this study, the Macatawa Watershed has lost 86% of its original wetlands!***

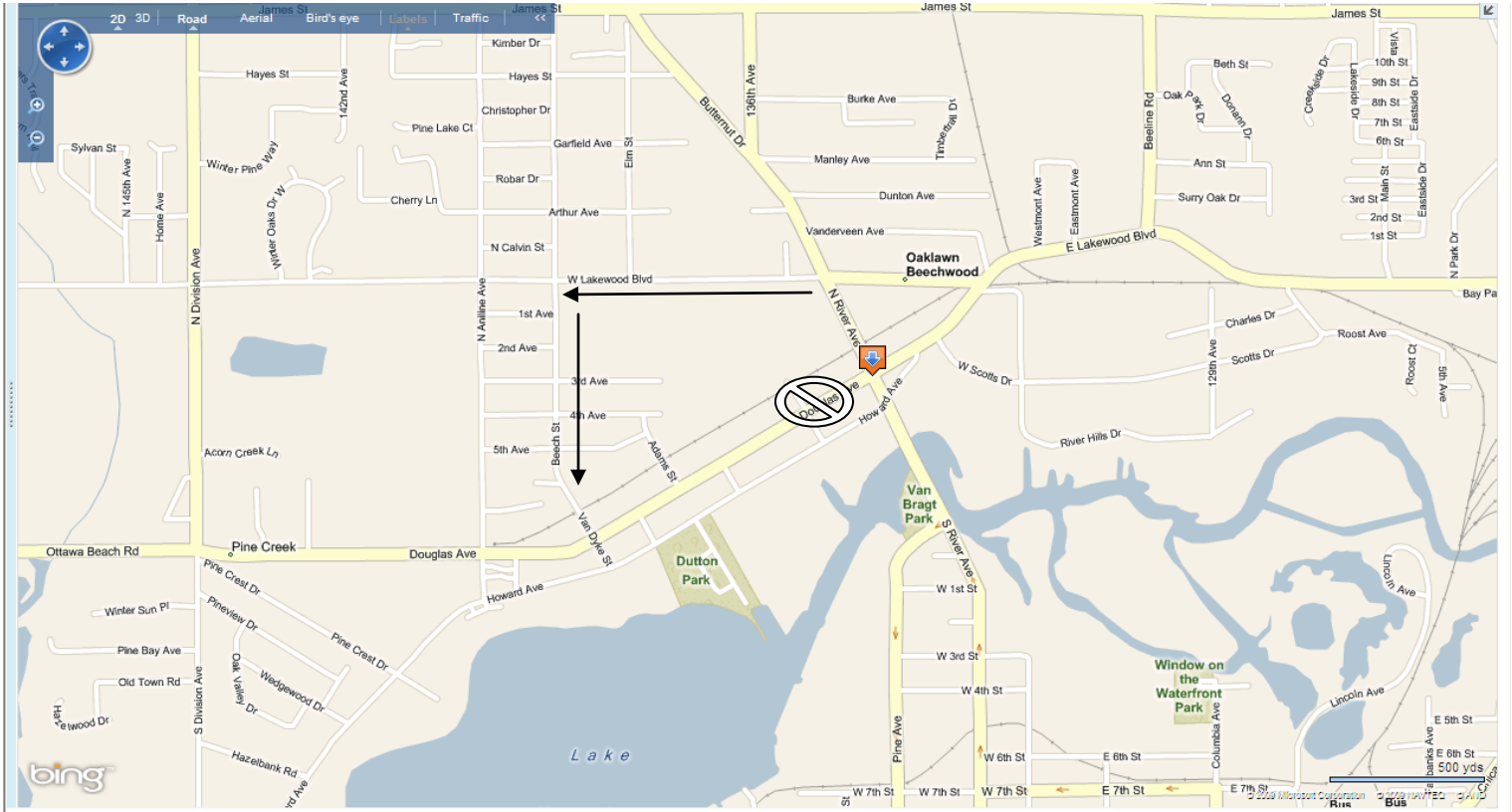
III. IDENTIFYING CRITICAL AGRICULTURAL AREAS

*Identifying critical agricultural areas is an important piece of the watershed management plan and prioritization process. We will consider a variety of different information sources and start making a list of what factors should determine where the most critical agricultural areas are located.*

IV. SCHEDULE NEXT MEETING FOR OCTOBER

# WATCH OUT FOR ROAD CONSTRUCTION!

## DOUGLAS AVENUE IS CLOSED WEST OF RIVER AVENUE!



**To get to our office you must instead take Lakewood Blvd west to Beech St. Take Beech St south to Douglas. Turn left on Douglas and our office will be on the left hand side.**

